

FCC INFORMATION

This device complies with Part 15 of the FCC Rules. Operation is subject to the following two conditions:

- 1) This device may not cause harmful interference.
- 2) This device must accept any interference received including interference that may cause undesired operation.

WARNING: Changes or modifications to this unit not expressly approved by the party responsible for compliance could void the user's authority to operate the equipment. Note: This equipment has been tested and found to comply with the limits for a Class B digital device, pursuant to Part 15 of the FCC Rules. These limits are designed to provide reasonable protection against harmful interference in a residential installation. This unit generates, uses and can radiate radio frequency energy and if not installed and used in accordance with the instructions, may cause harmful interference to radio communications. However, there is no guarantee that interference will not occur in a particular installation. If this equipment does cause harmful interference to radio or television reception, which can be determined by turning the equipment off and on, the user is encouraged to try and correct the interference by one or more of the following measures:

- Reorient or relocate the receiving antenna.
- Increase the separation between the equipment and receiver.
- Connect the equipment to an outlet on a circuit different from that to which the receiver is connected.
- Consult the dealer or an experienced radio/TV technician for help.

ONE (1) YEAR LIMITED WARRANTY

Brookstone® warrants this product against defects in materials and/or workmanship under normal use for a period of ONE (1) YEAR from the date of purchase by the original purchaser ("Warranty Period"). If a defect arises and a valid claim is received within the Warranty Period, at its option, Brookstone will either 1) repair the defect at no charge, using new or refurbished replacement parts, or 2) replace the product with a new product that is at least functionally equivalent to the original product, or 3) provide a store credit in the amount of the purchase price of the original product. A replacement product or part, including a user-installable part installed in accordance with instructions provided by Brookstone, assumes the remaining warranty of the original product. When a product or part is exchanged, any replacement item becomes your property and the replaced item becomes Brookstone's property. When a store credit is given, the original product must be returned to Brookstone and becomes Brookstone's property.

Obtaining Service: To obtain warranty service, call Brookstone Limited Warranty Service at 1-800-292-9819. Please be prepared to describe the product that needs service and the nature of the problem. A purchase receipt is required. All repairs and replacements must be authorized in advance. Service options, parts availability and response times will vary. You are responsible for delivery and the cost of delivery of the product or any parts to the authorized service center for replacement, per our instructions.

Limits and Exclusions: Coverage under this Limited Warranty is limited to the United States of America, including the District of Columbia and the U.S. Territories of Guam, Puerto Rico, and the U.S. Virgin Islands. This Limited Warranty applies only to products manufactured for Brookstone that can be identified by the "Brookstone" trademark, trade name, or logo affixed to them or their packaging. The Limited Warranty does not apply to any non-Brookstone products. Manufacturers or suppliers other than Brookstone may provide their own warranties to the purchaser, but Brookstone, in so far as permitted by law, provides these products "as is." This warranty does not apply to: a) damage caused by failure to follow instructions relating to product's use or the installation of components; b) damage caused by accident, abuse, misuse, fire, floods, earthquake or other external causes; c) damage caused by service performed by anyone who is not a representative of Brookstone; d) accessories used in conjunction with a covered product; e) a product or part that has been modified to alter functionality or capability; f) items intended to be periodically replaced by the purchaser during the normal life of the product including, without limitation, batteries or light bulbs; g) any product sold "as is" including, without limitation, floor demonstration models and refurbished items; or h) a product that is used commercially or for a commercial purpose.

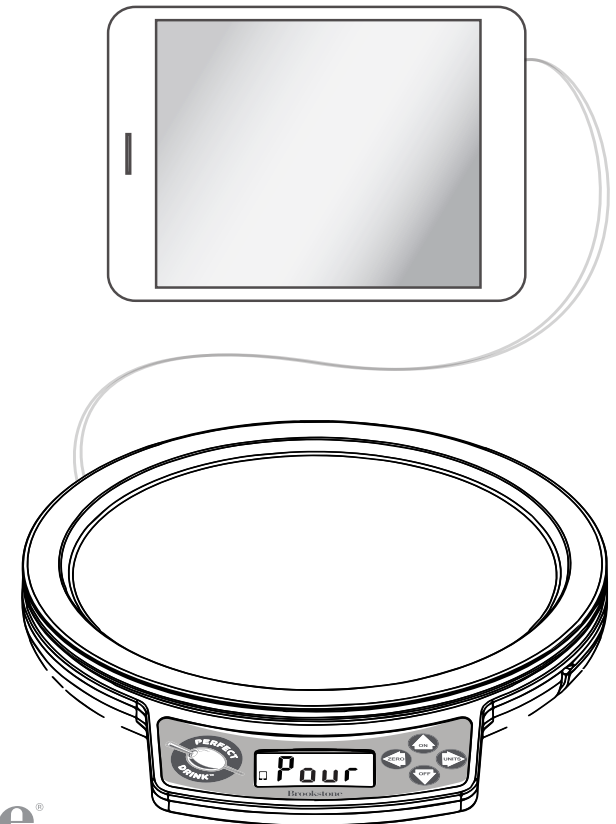
BROOKSTONE SHALL NOT BE LIABLE FOR INCIDENTAL OR CONSEQUENTIAL DAMAGES RESULTING FROM THE USE OF THIS PRODUCT, OR ARISING OUT OF ANY BREACH OF THIS WARRANTY. TO THE EXTENT PERMITTED BY APPLICABLE LAW, BROOKSTONE DISCLAIMS ANY AND ALL STATUTORY OR IMPLIED WARRANTIES, INCLUDING, WITHOUT LIMITATION, WARRANTIES OF MERCHANTABILITY, FITNESS FOR A PARTICULAR PURPOSE AND WARRANTIES AGAINST HIDDEN OR LATENT DEFECTS. IF BROOKSTONE CANNOT LAWFULLY DISCLAIM STATUTORY OR IMPLIED WARRANTIES, THEN TO THE EXTENT PERMITTED BY LAW, ALL SUCH WARRANTIES SHALL BE LIMITED IN DURATION TO THE DURATION OF THIS EXPRESS WARRANTY.

Some states disallow the exclusion or limitation of incidental or consequential damages or how long an implied warranty lasts, so the above exclusions or limitations may not apply to you. This warranty gives you specific legal rights and you may also have other rights, which vary from state to state.

Find thousands more
great ideas online

Brookstone®

Merrimack, New Hampshire USA 03054 • 800-846-3000 • Brookstone.com

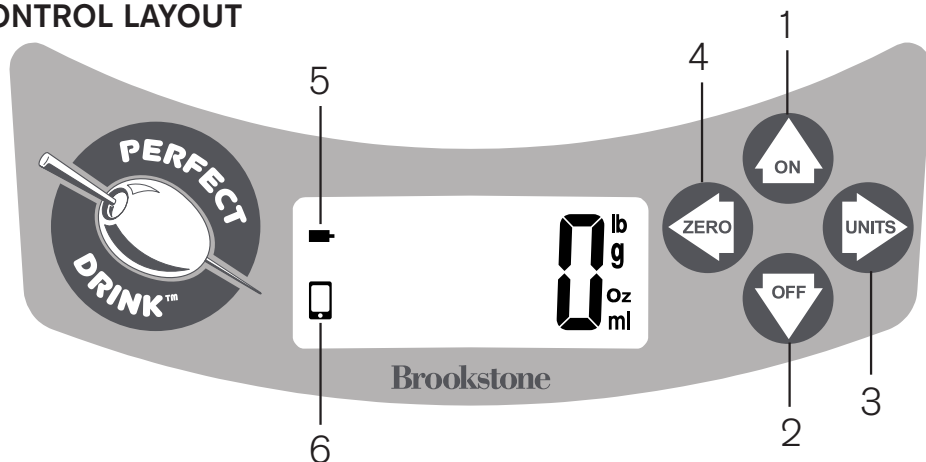


Brookstone®

Perfect Drink™
APP-CONTROLLED SMART BARTENDING

Download
FREE App

CONTROL LAYOUT



Note: ALL BUTTONS ARE TOUCH SENSITIVE. Gently touching a button (rather than pressing) will activate its feature.

1. ON Button
Touch and hold ON button to turn Scale on.
2. OFF Button
Touch and hold OFF button until display goes blank.
3. UNITS Button
To switch between units (lb, g, oz, ml) at any time during weighing, touch the UNITS button.
4. ZERO Button
Touch ZERO button to zero-out Scale before adding additional ingredients.
5. LOW BATTERY Indicator
The LOW BATTERY Indicator will appear and blink when batteries need to be changed. This indicator will only appear when battery is low.
6. SMART DEVICE Indicator
The SMART DEVICE Indicator appears when Scale is connected to a compatible Apple iOS or Android™ device.

CARE

CLEANING

Never immerse Scale in water or place in the dishwasher. Just wipe it off with damp cloth. The clear removeable tray is dishwasher safe.

STORAGE

Do not place heavy objects on top of Scale during storage. Doing so may affect the accuracy of the Scale.

SPECIFICATIONS

Batteries	3 x AAA
Maximum Weight Capacity	4000 grams / 8.8 lbs
Weight Resolution	1 gram

SETUP & USE

INSERT THE BATTERIES

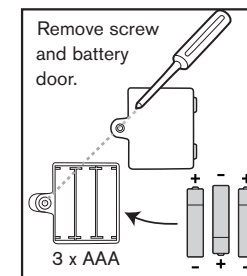
The battery compartment is on the bottom of Scale. Remove the screw and battery door. Insert 3 AAA batteries (not included) matching polarity icons with those on the battery compartment. Replace the battery door and tighten the screw.

AUTO SHUT OFF

After 2 minutes of inactivity, Scale will shut off automatically.

MAXIMUM WEIGHT

When maximum weight capacity for Scale (4 kg / 8.8 lbs) is exceeded, the display will show "EEEE". Remove weight from Scale immediately.



SMART DEVICE CONNECTION

DOWNLOAD THE FREE PERFECT DRINK™ APP

Go to the iTunes® App Store® (for Apple devices) or Google Play™ (for Android) to download the Perfect Drink™ App.

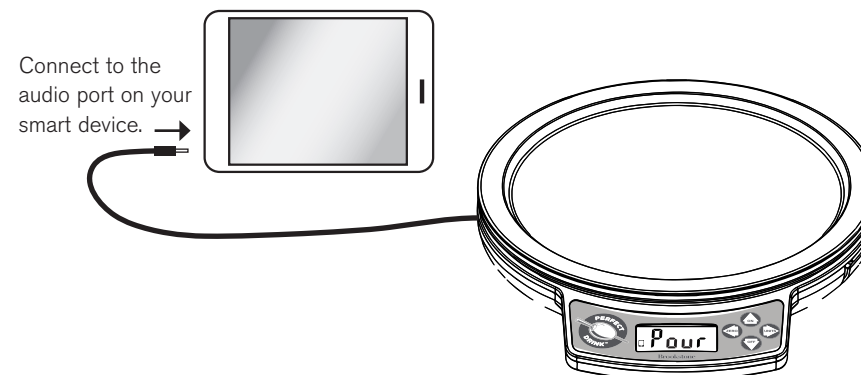
SUPPORTED DEVICE SYSTEM REQUIREMENTS

- iOS 5.1 or higher
- Android 4.0 or higher



CONNECT THE CABLE

Connect the cable stowed away on the bottom of Scale to the audio port on your smart device.



iPad, iPhone, and iPod touch are registered trademarks of Apple Inc. App Store is a service mark of Apple Inc. Android and Google Play are trademarks of Google, Inc. Perfect Drink™ is a trademark of Pure Imagination, LLC.